

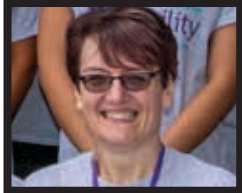


working with disabled people



**Playscheme Report**  
Summer 2018

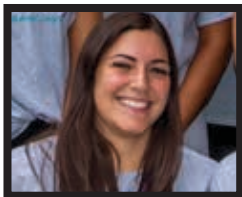
## Meet the Playscheme team:



**Michelle Morgan**



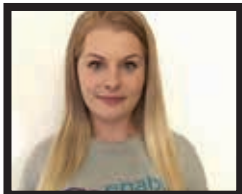
**Jacqui Munro**



**Danni Dean**



**Charlotte Bleach**



**Jaime Lee Knight**



**Chris Pearson**



**Julie Nethercote**

# Enable Ability Playscheme Summer 2018

The Summer 2018 Playscheme was held this year at The Mary Rose Academy due to the major works being done at our normal residence of Redwood Park. But this did not stop the children enjoying their time, supported and encouraged by the staff of Enable Ability.

During the four weeks of the Playscheme, with over 50 children per day, 130 different children participated who were supported by 87 Enable Ability staff and volunteers who organised a huge variety of indoor and outdoor activities to encourage and stimulate the children. These included Boogie Mites, Reptile Discovery, themed days, arts and crafts, the ever-present Bouncy Castle, a pirate ship, and our best-ever Festival Day on Friday 17th August.



The Enable Ability staff team are pictured above on the first day of the Playscheme on 30th July sporting their new T-shirts. The rest of the team were away on the minibuses collecting the children needing transport.

This year we decided to collect some images of the children over the period in order to show parents and carers some of the things their children get up to, how they respond to the activities provided and how they interact with the staff. We hope you find this document helpful.

It was impossible to be able to take images of every child that attended, but our thanks go to Trustee, Bill John (right) for coming along to a good number of days to capture the fun that is the Enable Ability Playscheme.

Best wishes,

Michelle, Jacqui, Julie, Danni, Charlotte, Jaime Lee, Chris .....  
and all the staff of the Enable Ability Playscheme.















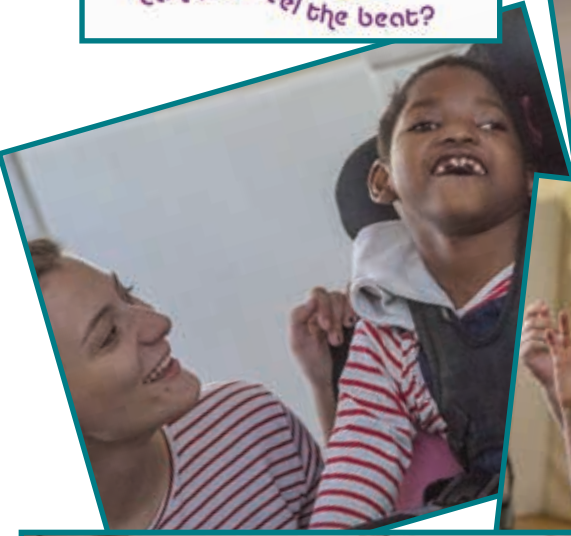




SUPER  
HERO  
ACTION









# Bouncy Fun







A Fantastic  
Festival Day







Enable  
Ability  
Victorious!





# Puzzle Time





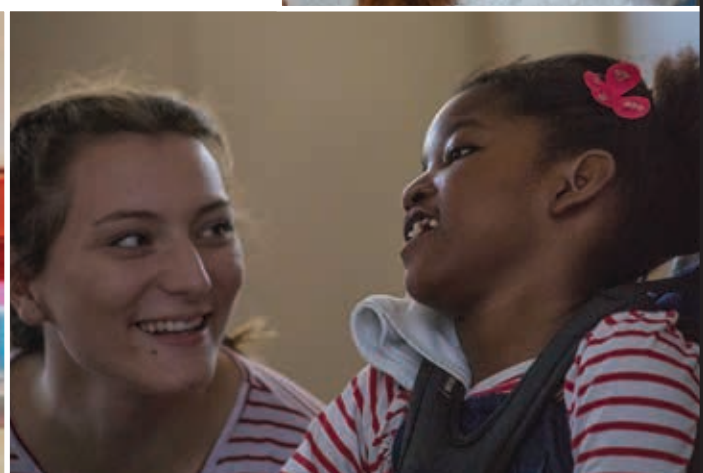
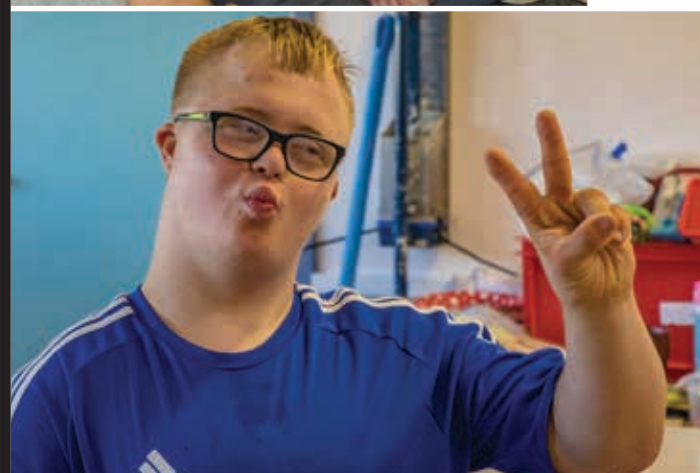
# Ball Magic







Just  
Chillin'





## My Personal Favourites:

It was a privilege to attend the Enable Ability Playscheme this summer. Not every child is comfortable in having their portrait taken but after a few sessions I managed to gain the trust of some. When young Alex signed to me to take more I was overwhelmed with his smile. At the Festival Day the sheer fun and laughter being shared by children and staff was a real pleasure to see and the image below captures the moment perfectly for me. Bill John, photographer.







Charity Registration: 276422  
Company No: 1405937

working **with** disabled people

311-313 Copnor Road  
Portsmouth  
Hampshire  
PO3 5EG



023 9267 1846



[enquiries@enableability.org.uk](mailto:enquiries@enableability.org.uk)



[www.enableability.org.uk](http://www.enableability.org.uk)



[@enableability](https://www.facebook.com/enableability)



enable  
ability **Playscheme**

Contact the Playscheme directly:



023 9267 1848



[children@enableability.org.uk](mailto:children@enableability.org.uk)

[www.enableability.org.uk](http://www.enableability.org.uk)